



# HEINE KROG IVERSEN

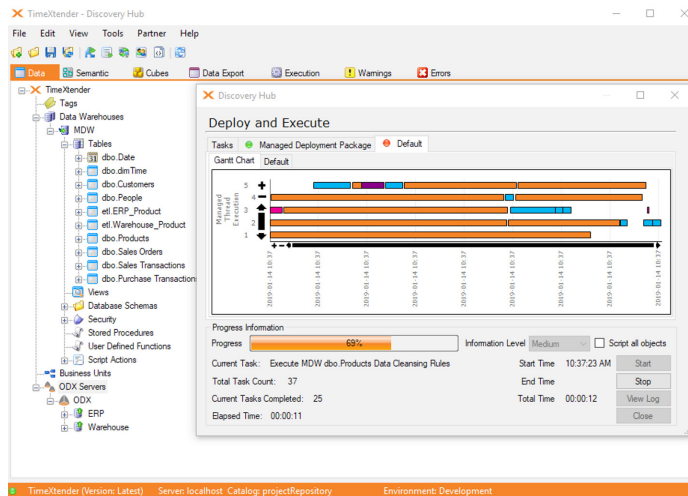
## CEO & Founder of TimeXtender

TIMEXTENDER

### FIRM PROFILE

TimeXtender inspires quality business decisions with data, mind and heart. The company does this for one simple reason: because time matters. Ranked one of the fastest growing private software companies by various media and analysts' groups, TimeXtender enables businesses to make quality business decisions significantly faster with its flagship technology platform Discovery Hub®.

TimeXtender's Discovery Hub® is a high-performance data management platform that provides capabilities and automation for data access, modeling, and compliance to help companies create a modern, future-proof data estate. This is accomplished by moving from a patchwork of disparate data management tools to a single, integrated platform, thereby eliminating long development cycles and accelerating time to data insights by up to 10 times. This delivers faster transformation for organizations seeking to become a data-driven business.



Discovery Hub® provides organizations the capability to connect to most data sources and to catalog, model, move, and document data for analytics and AI and then use the data visualization or AI tool of their choice to deliver insights. This results in the full power of business intelligence in a structured, governed and secured environment, establishing self-service for users to get actionable insights in less time, while simplifying their compliance journey.

TimeXtender is a Microsoft Gold Certified Partner and its Discovery Hub® is Microsoft Azure Certified and available in the Azure Marketplace. Discovery Hub® was built with a cloud-first mindset so that companies can benefit from the Intelligent Cloud and is also available on-premises or hybrid.

The company was founded in 2006 and has co-headquarters in Denmark and the U.S. with several regional offices around the world. It serves more than 3,000 customers, including Fortune 500, large-sized enterprises and mid-sized companies, through its global network of partners.

### CONTACT

Website: [www.timextender.com](http://www.timextender.com)

Facebook: @timextender

Twitter: @TimeXtender

LinkedIn: [www.linkedin.com/company/timextender](http://www.linkedin.com/company/timextender)

### HEINE KROG IVERSEN

Heine Krog Iversen is the founder and CEO of TimeXtender. As chief executive for more than 12 years, Heine has transformed TimeXtender from a small startup to one of the fastest growing private software companies in the world. He oversees strategic planning, global outreach, positioning and differentiation, and organizational growth. Heine has worked tirelessly to manage the company's fast growth through the expansion of new offices and staff in various global regions, building a global network of channel partners, and servicing more than 3,000 customers worldwide.

He has played an instrumental role as an industry thought leader to educate the business community about how to best manage a corporate data estate. His professional mission is to empower every person in every organization with instant access to data to enable them to achieve more by making quality decisions with data, mind and heart. He maintains that businesses can free up time and energy throughout their organization, allowing them to dedicate their workforce to greater innovation, purposeful growth and game-changing breakthroughs.

Heine argues that data is the most valuable currency, but only if available at the right time with proper quality. He believes that superior business decisions cannot be made by data alone, but that all relevant data should be available whenever a decision needs to be made. He advocates that although data is collected based on historical information, there is still the inherent need to combine this data with strategy, knowledge of new inventions, and often a strong "hunch," typically derived from experience and knowledge. With this dynamic combination, businesses can then make strategic decisions to transform their corporation. He's been published extensively, spoken at numerous conference and seminars, and is regularly looked upon for his insights.